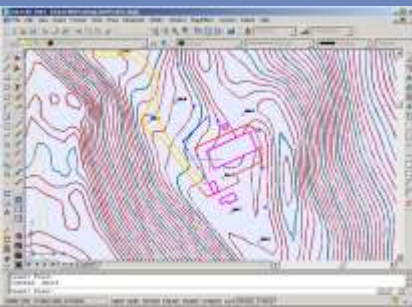
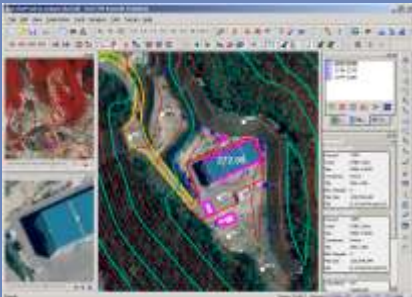
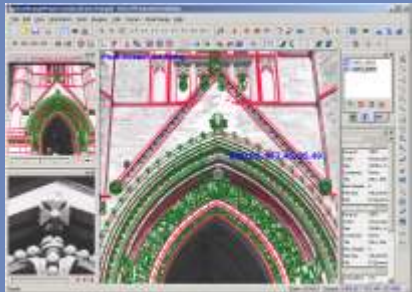




Summit Evolution™ World-Class Digital Photogrammetric Workstation



Summit Evolution takes 3D digital photogrammetry to a new level with its powerful combination of digital stereoplotter, CAD/GIS interfaces, video superimposition, and automated feature editing. Image features from a Summit Evolution project are digitized directly into AutoCAD®, MicroStation® or ArcGIS® files. DAT/EM Super/Imposition™ is integrated into every Summit Evolution Professional system, as are orientation procedures, coordinate transformation, mapping-related digitizing tools, and the DAT/EM Map/Editor software.

Summit Evolution's projects may be created from a wide range of imagery, including scanned film and digital aerial, close range, digital sensor, orthophoto, synthetic aperture radar, LIDAR, and satellite sources. It can also import projects from third party systems and bring them into immediate production as Summit Evolution projects. Projects not already registered in three dimensions can use the Follow Terrain tool to automatically elevate 2D vectors to produce 3D results.

Three levels of Summit Evolution offer digital photogrammetric workstation technology to fit every production style and pocketbook:

- "Professional": Full-function, fully capable stereoplotter.
- "Feature Collection": For those whose orientation requirements are met elsewhere, but who still require the world-class Capture interface to the CAD or GIS of their choice.
- "Lite": A low-cost system designed for viewing, terrain following, and simple editing and measurement.

Scale new heights in 3D mapping technology with
Summit Evolution from DAT/EM Systems International



Trans global Geomatics

8-3-214/10/A,
Srinivasa Nagar colony west,
Ameerpet,
Hyderabad-500038

Off-+91-040-23745032

Mobile-+91-9866479962/
9849252434



Features of Summit Evolution Professional

The World of Powerful 3D Geospatial Data At Your Fingertips.



- Supports monochromatic, panchromatic, three-channel and four-channel multispectral imagery from scanned aerial film, matrix and push-broom digital airborne cameras, close-range imagers, orthophotos, satellites, LIDAR, and synthetic aperture radar.
- Imports third-party softcopy projects, aerotriangulation results, and other orientation files for quick setup.
- Full range of manual and automatic image orientation capabilities.
- Digitizes 3D vectors directly into AutoCAD, MicroStation, or ArcGIS using DAT/EM's robust, world-class **Capture** interface.
- Robust and easy-to-use user interface for maximum productivity.
- Multiple stereo viewing windows including Bird's-eye, Close-up, Project Overview, and 3D Vector Split window for a variety of visualization and feedback tools.
- Unlimited zoom levels, fast pan, and automatic loading of adjacent stereomodels, with Super/Imposition of CAD/GIS vectors over image view.
- **DAT/EM Orthophoto and Mosaic** modules for easy and precise creation of orthomosaics, including True Orthos.
- The **Terrain Visualizer** tool for a dynamic, real-time preview of contours while DTM objects are edited.
- **Contour Creator** for creating and writing the polished contours to the CAD file.
- Interface to the **DAT/EM Satellite ProPacks**, our solution to providing satellite orientations and 3D vector feature collection from satellites.
- **Airfield3D** standards-compliant airspace obstruction mapping tool.
- **Point Translator** for importing, georeferencing, and converting vector data, including LIDAR and other DTM features.
- Automatic elevation snapping and terrain following tools.



Supplied with

Summit Evolution Professional :

- Summit Evolution software
- DAT/EM Capture for MicroStation, AutoCAD or ArcGIS
- Orthophoto & Mosaic
- Terrain Visualizer
- Contour Creator
- Satellite ProPack Interface
- Point Translator
- Airfield 3D
- Map/Editor automated editing software for AutoCAD or MicroStation
- Super/Imposition software
- Operation Manuals
- One year system support

Recommended configuration

(<http://www.datem.com/> | [Support](#) | [Configurations](#))

- High-end Technical Workstation
- Windows XP Professional, VISTA Ultimate and Windows 7 Ultimate or Professional operating systems; 32- or 64-bit.
- Processor: 2 Quad Core Intel® XeonT with 2.50 GHz processors or higher
- Memory: 2 GB or more of SDRAM
- Hard Drive: 200 GB or larger hard drive (7,200 RPM speed)
- Stereo Monitors: Planar StereoMirror Dual LCD monitor or NVIDIA 3D Vision Bundle
- Secondary (CAD) Monitor: 20 inch or greater LCD panel; compatible polarization
- Input Devices: Stealth or Softmouse 3D cursor, System Mouse, and DAT/EM TouchPad
- DVD drive or Internet connection
- USB and serial ports to support hardware connections
- NVIDIA Quadro FX 4600 or better
- AutoCAD 2002 series through 2011; MicroStation V8, V8 2004 Edition; ArcGIS 9.1 - 9.3.1.

Trans global Geomatics

8-3-214/10/A,
Srinivasa Nagar colony west,
Ameerpet,
Hyderabad-500038

Off-+91-040-23745032

Mobile-+91-9866479962/
9849252434

DAT/EM Capture, Summit Evolution, LandsCape, DAT/EM Keypad, DAT/EM TouchPad, DAT/EM TouchScreen and the DAT/EM logos are trademarks of DAT/EM Systems International. Trademarks provided under license from ESRI. Other product and company names mentioned herein may be the trademarks of their respective owners.