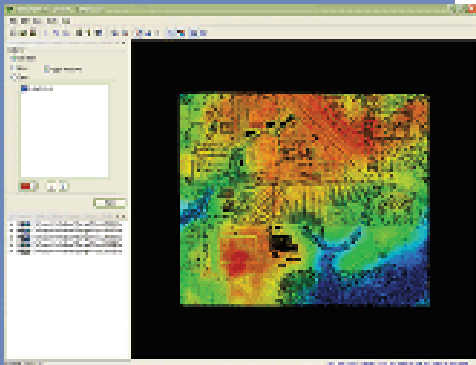




# DAT/EM Landscape™

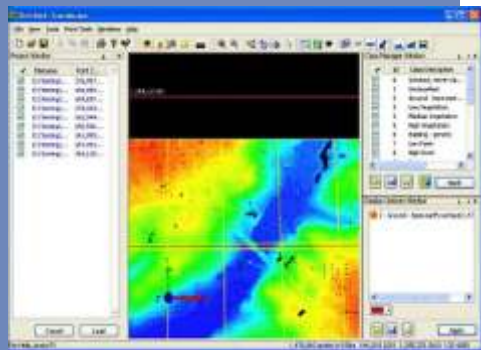
## Essential Point Cloud Editing Toolkit



New from DAT/EM Systems International, [Landscape](#) is an essential software tool for editing large terrain point sets such as LiDAR (Light Detection and Ranging) files. It provides an advanced, efficient, fast, and easy-to-understand portal into the world of 3-dimensional LiDAR points. [Landscape](#) is equipped with utilities for editing, modifying, and classifying the points and for generating new data based on the points. [Landscape](#)'s tools can be configured by the user to enable better understanding of the data view. The editing tools in [Landscape](#) allow for easy modification of LiDAR data. Editing tools can be used to affect a single point, all points in a project, or a selection built using [Landscape](#)'s sophisticated filtering tools. The feature collection tools enable [Landscape](#) to digitize 3D vectors using [DAT/EM's Capture](#) packages. CAD and GIS drawings in AutoCAD®, MicroStation®, and ArcGIS® formats may all be superimposed into [Landscape](#), and objects in those drawings may be used as input into the various tools in [Landscape](#). Or use [DAT/EM Drawing Tools](#), the simple built-in vector editor.

Several large-point-dataset tools are incorporated in [Landscape](#) and are also available with a [Summit Evolution™ Professional](#) installation:

- [Generate LiDAR Frame](#) – generates images and their stereo mates from point data files, enabling 3D stereoscopic imaging.
- [Generate Stereo Mate](#) – generates stereo mates (.tif) from existing LiDAR images (i.e. "LiDARgrammetry")
- [Point Transfer](#) – point file management tool to combine, extract, and merge files.
- [Super/Imposition](#) Tool – load vector and orthophoto files to view together with the points in [Landscape](#).

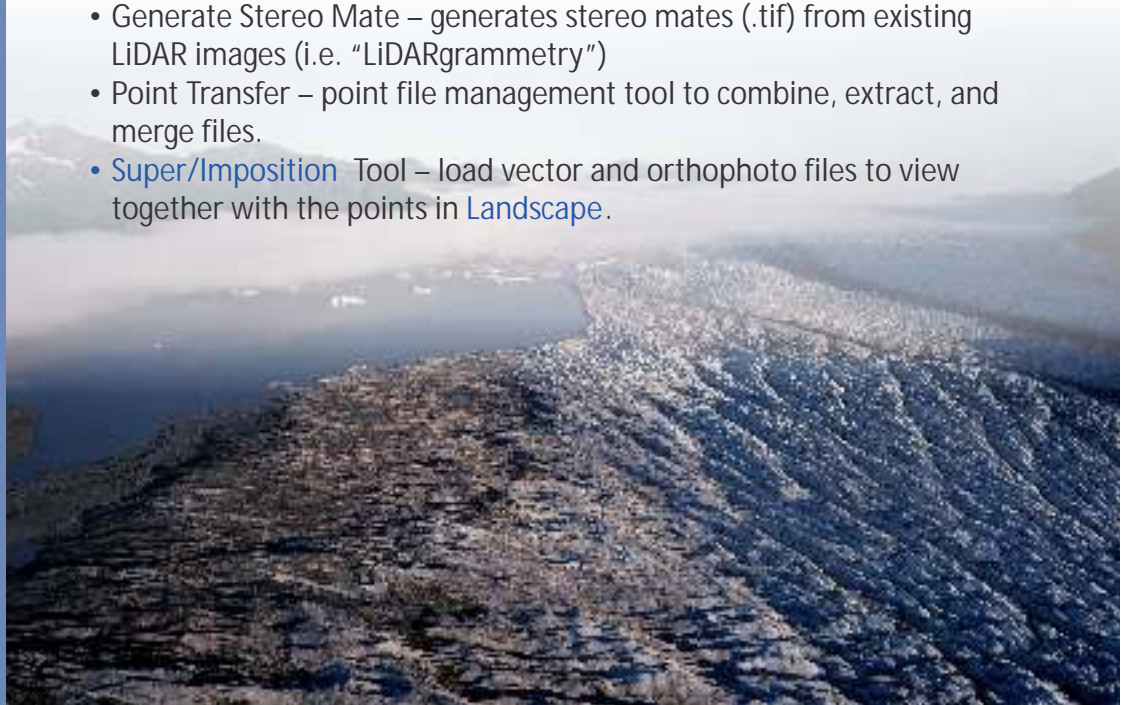


Trans global Geomatics

8-3-214/10/A,  
Srinivasa Nagar colony west,  
Ameerpet,  
Hyderabad-500038

Off-+91-040-23745032

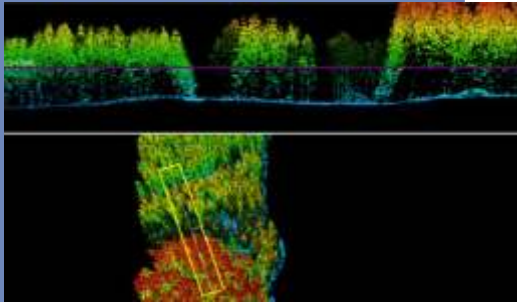
Mobile-+91-9866479962/  
9849252434



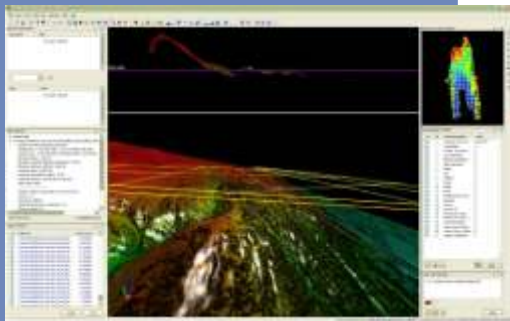


# Landscape Features

**Make your point with DAT/EM LANDSCAPE**



- View points in perspective stereo with many coloring and viewing options. Roam and zoom from any angle or distance.
- No limit to the number of simultaneous input files. Tools for controlling the detail on display.
- Full 3D cursor support for panning, zooming, rotating, selecting, and digitizing. Plus button programming and macro support.
- Edit and reclassify points and write the corrected point set to a new file.
- Digitize new 3D vectors such as breaklines based on the points.
- View existing .dxf, .dwg, .dgn, or .shp vector files with the points.
- Colorize your view of your pointcloud by elevation, return, flight-line, intensity, RGB color (orthophoto), or classification.
- Draw and edit objects directly into AutoCAD, MicroStation, or ArcGIS. Or use the built-in vector editor, [DAT/EM Drawing Tools](#).
- Superimpose existing objects directly from AutoCAD, MicroStation, or ArcGIS.
- Fully integrated with [Summit Evolution](#), DAT/EM's world-class digital photogrammetric workstation. Superimpose [Landscape's](#) points on a [Summit](#) stereomodel for direct validation of your work.



## Recommended configuration

(<http://www.datem.com/Support/Configurations>)

- High-end Technical Workstation
- Windows XP Professional, VISTA Ultimate and Windows 7 Ultimate or Professional operating systems; 32- or 64-bit.
- Processor: 2 Quad Core Intel® XeonT with 2.50 GHz processors or higher
- Memory: 2 GB or more of SDRAM
- Hard Drive: 200 GB or larger hard drive (7,200 RPM speed)
- Stereo Monitors: Planar StereoMirror Dual LCD monitor or NVIDIA 3D Vision Bundle
- Secondary (CAD) Monitor: 20 inch or greater LCD panel; compatible polarization
- Input Devices: Stealth or Softmouse 3D cursor, System Mouse, and [DAT/EM TouchPad](#)
- DVD drive or Internet connection
- USB and serial ports to support hardware connections
- NVIDIA Quadro FX 4600 or better
- AutoCAD 2002 series through 2011; MicroStation V8, V8 2004 Edition, V8i; ArcGIS 9.1 - 10.

Trans global Geomatics

8-3-214/10/A,  
Srinivasa Nagar colony west,  
Ameerpet,  
Hyderabad-500038

Off-+91-040-23745032

Mobile-+91-9866479962/  
9849252434